

Series #

ASC Bauer I280-100-E3 VERITAS

| | |
|----------------------|--------------------------------------|
| Capacity: | 121.0 SCFM |
| Pressure: | 5000 PSI |
| Power Supply: | Electric / Air Cooled |
| Motor: | 100 HP |
| Stages: | 4 |
| Frame Style: | Open frame |
| Compressor: | Bauer / Veritas |
| Dimensions: | Width 92" / Length 109" / Height 81" |
| Weight: | 6500 lbs |



The Alpha Seismic ASC Bauer I280-100-E3 VERITAS Seismic Air Compressor delivers 5,000 PSI for your true high pressure, sustained high performance needs.

General Description

The K28.0 compressor block is used to compress air pressures up to 5,000 psi (350 bar). The compressor block is of a four stage, three cylinder design, whereby 1st and 2nd Stage are housed in one common stepped cylinder. The 1st/2nd Stage Cylinder is positioned vertically, the 3rd Stage Cylinder to the right, viewing at the Flywheel. The 4th Stage Cylinder on the left forms the second leg of the T arrangement.

Applications

- High Pressure Air Supply
- Downhole Seismic Data Acquisition
- Marine Seismic Data Acquisition

Standard Features

- Multistage, air cooled, pressure lubricated, continuous-duty rated reciprocating compressor
- Electric motor (ODP) with v-belt drive, belt guard and belt tensioning device
- Automatic condensate drain with condensate collector. Collector includes switch for high condensate level.
- Automatic operation with PLC controller. Includes operator keypad and text display for operation, maintenance and troubleshooting
- NEMA 4 rated electrical enclosure with UL listed control panel
- Fused control voltage transformer
- Hour meter and temperature switch
- Pressure sensors for oil pressure and final pressure
- Emergency stop push button and audible alarm
- Ambient temperature range 40 degrees to 113 degrees F
- Soft starter
- TEFC motor
- Circuit breaker disconnect

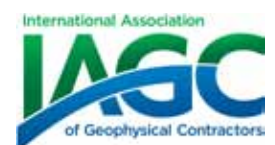
ALPHA
SEISMIC
COMPRESSORS
Offshore Rentals
Air Source Solutions

Alpha Seismic Compressors

Corporate and Sales Office:
One World Trade Center - Portland, Oregon
503-244-0701 - Voice
888-800-2232 - Toll-free
503-244-0589 - Fax

Fleet Operations: Houston, Texas

fred@alphaseismiccompressors.com
www.alphaseismiccompressors.com



ASC Bauer I280-100-E3 VERITAS Compressor Configuration

I280-100-E3 Veritas

| | |
|---------------------------|-------------------------|
| Medium | air |
| Charging Rate | 145.0 scfm ¹ |
| Free Air Delivery | 121.0 scfm ² |
| Inlet pressure | atmospheric |
| Operating pressure | 5,000 psig |
| Ambient temperature range | 40° - 115° F |
| Weight | Approximately 5,000 lb. |

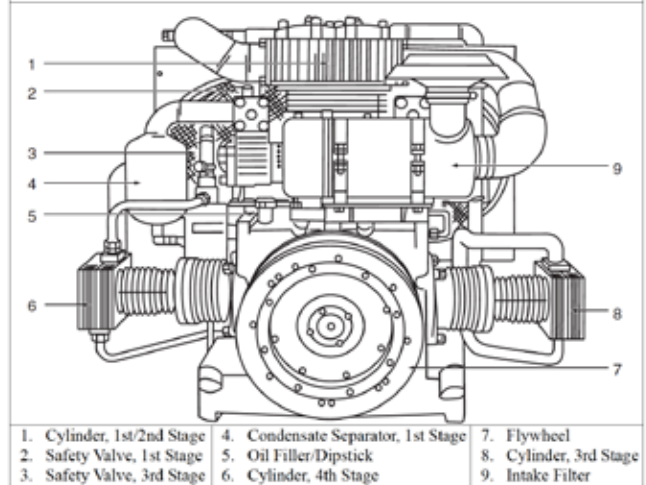
.1 Compressor Block

| | |
|---|--------------------------------|
| IK28.0 | Mod. 3 |
| No. of Stages | 4 |
| No. of Cylinders | 3 |
| Cylinder Bore, 1st Stage | 8.5 in (215 mm) |
| Cylinder Bore, 2nd Stage | 8.5/7.3 in (215/185 mm) |
| Cylinder Bore, 3rd Stage | 1.96 in (50 mm) |
| Cylinder Bore, 4th Stage | 0.94 in (24 mm) |
| Piston Stroke | 4.9 in (125 mm) |
| Direction of Rotation, when facing flywheel | Counterclockwise |
| Intermediate Pressure, 1st Stage | 36 -50 psi (2.5 - 3.5 Bar) |
| Safety Valve Setting, 1st Stage | 75 psi (5.0 Bar) |
| Intermediate Pressure, 2nd Stage | 200 - 230 psi (14 - 16 Bar) |
| Safety Valve Setting, 2nd Stage | 350 psi (24 Bar) |
| Intermediate Pressure, 3rd Stage | 950 - 1000 psi (65 - 70 Bar) |
| Safety Valve Setting, 3rd Stage | 1160 psi (80 Bar) |
| Maximum Compressor Speed | 1200 RPM |
| Oil Capacity | Approximately 31.7 Qts. (30 l) |
| Oil Pressure | 43 - 57 psi (3 - 4 bar) |
| Recommended Oil | Bauer OIL-0024 |
| Maximum Inclination | 10° to all sides |
| Maximum Operating Pressure | 5,000 psig |

.2 Compressor Drive

| Voltage | Frequency | Phase | Power | Type | BAUER PN |
|----------------------------|-----------|-------|--------|------|----------|
| 208 - 460 VAC ³ | 60 Hz | 3 φ | 100 HP | TEFC | MTR-0236 |

Figure 4-1 K28.0 Compressor Block, Front View (Oil Pump Side)



Other ASC High Pressure Compressors Rentals Available

This Model Other models available for renting

| Models Available for RENT | Stages | Air Flow Rate (CFM) | Width (inches) | Length (inches) | Height (inches) | Net Weight (lbs) | Motor Power (hp) |
|--|--------|---------------------|----------------|-----------------|-----------------|------------------|------------------|
| ASC 100D (2) | 4 | 100 SCFM | 60 | 132 | 72 | 8,500 | 140 |
| ASC 100E-EP (1) | | | | | | | |
| ASC Bauer I280 100 E3 VERITAS (1) | 4 | 121.0 SCFM | 92 | 109 | 75 | 6,500 | 100 |
| ASC 425D (2) (John Deere) | 4 | 425 | 75 | 75 | 75 | 6,500 | 75 |
| ASC 750E (1) | | 700 | | | | 5,000 | 200 |
| Sauer Compressor WP 5000 (2) | 4 | 48 - 90 | 61" | 120" | 66" | 6,500 | 75 |

(1) Electric, (2) Diesel