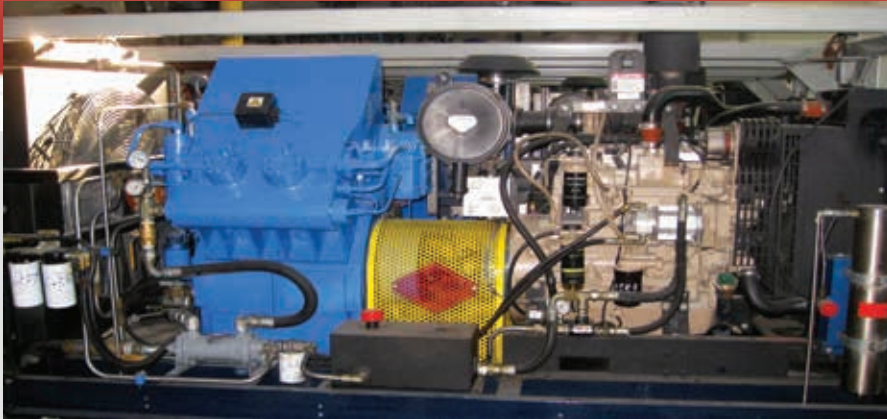


ASC 200D

High Pressure Compressor System

(Ask about our Installation, Operation and Maintenance Packages)



Features

- ✓ V-Design pressure lubricated 4 stage CompAir Compressor
- ✓ Closed loop water cooled
- ✓ Model #5437.1.HIL.IA high pressure air compressor
- ✓ Powered By John Deere 4.5L PowerTech® Tier 3; 140 HP diesel engine
- ✓ Centrifugal controlled clutch assembly with ramp control for load/ unload features
- ✓ 189 SCFM @ 2200 PSI
- ✓ Full automated control system with visual and audible alarm system
- ✓ Automatic condensate drain system
- ✓ Dimensions: 133" L x 58" W x 73H (exhaust pipe removed)
- ✓ 95 Gallon Fuel tank
- ✓ 6 GPH fuel consumption
- ✓ Weight: 8,480 lbs
- ✓ Built in Fail-Safe

Applications

- ✓ Designed for offshore open deck, harsh environments
- ✓ Designed for harsh environments
- ✓ DNV 2.7-1 provisions for both crane and forklift handling
- ✓ Inner frame assembly shock mounted to outer cage assembly
- ✓ Reliable, up to date components
- ✓ Meets latest emissions standards
- ✓ DNV - 2.7-1

Contact Us:

1-888-800-2232 - Toll free

fred@alphaseismiccompressors.com

ALPHA 
SEISMIC COMPRESSORS
Offshore Rentals | Air Source Solutions

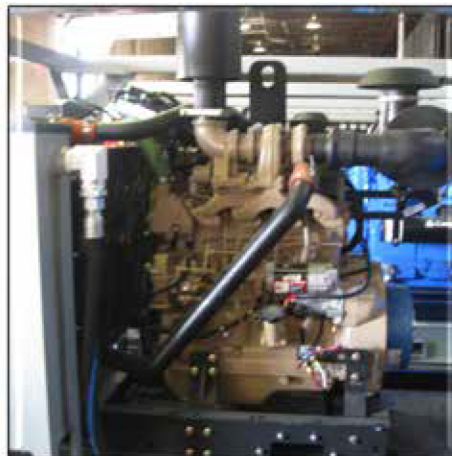


Compressor Block

- ✓ High Pressure Reciprocating Compair 5437.1.HIL.IA
- ✓ 3000 PSI MAX
- ✓ 1st Stage Running Pressure 50-80 PSI
- ✓ 2nd Stage Running Pressure 390-470 PSI
- ✓ 3rd Stage Running Pressure 1300-1400 PSI
- ✓ Final Stage Relief Valve Setting 5500 PSI
- ✓ Automatic Diaphragm Drain System
- ✓ Pressure Maintaining Valve Setting of 1200 PSI
- ✓ Liquid Cooling Method
- ✓ Compressor Speed of 1800 RPM
- ✓ Absorbed Power of 119 HP
- ✓ Counter Clockwise Direction Of Rotation (Facing Flywheel)
- ✓ 4 Stages

**ALPHA
SEISMIC
COMPRESSORS**

**Offshore Rentals
Air Source Solutions**



Prime Mover

- ✓ Open Industrial Diesel Engine
- ✓ John Deere 4045hf285
- ✓ Operating Range of 1700-2400 RPM
- ✓ Inline 4 Cylinder
- ✓ Power Rating of 140 HP
- ✓ 4.5 Liter Displacement
- ✓ CCW Rotation
- ✓ 12 VDC Electrical System
- ✓ Tier 3 Emissions Standards

Recommended Fluids

- ✓ Specialized Oils & Hydraulic Fluids will be provided



Package Features

- ✓ Easy to use User Panel
- ✓ Gauges and LCD Display
- ✓ Maximum Working Pressure of 5000 PSI Direct Drive Centrifugal Clutch
- ✓ Accumulator /Bottle Rack
- ✓ 1/2 Inch FNPT Outlet Connections
- ✓ 12 VDC Control System Voltage
- ✓ Hydraulic Cooling Fan Drive
- ✓ Forklift Tines / 4 Point Overhead
- ✓ DNV 2.7-1

Capacities

- ✓ 95 Gallon Fuel Capacity
- ✓ 7 Gallon Oil Capacity
- ✓ 4 Gallon Engine Oil Capacity
- ✓ 15 Gallon Coolant Capacity
- ✓ 5 Gallon Hydraulic Fluid
- ✓ 10 Gallon Waste Water/Oil
- ✓ 6 GPH Fuel Consumption
- ✓ 7 GPH vs. 4.8 GPH (100D)

