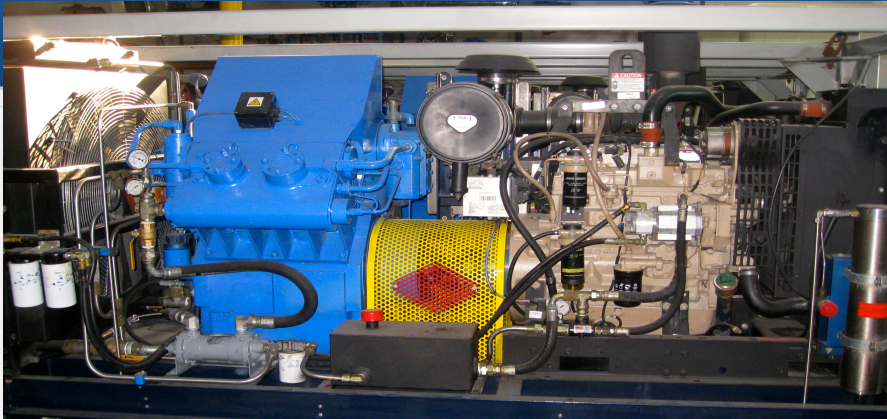


# ASC 100D

## High Pressure Compressor Package



### Applications

- ✓ Designed for offshore open deck applications
- ✓ Designed for harsh environments
- ✓ Provision made for both crane and forklift handling
- ✓ Inner frame assembly shock mounted to outer cage assembly
- ✓ Newer model components
- ✓ Meets Latest emissions standards

### Features

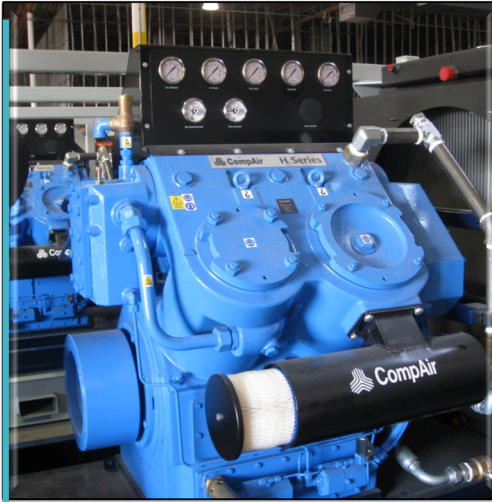
- ✓ V-Design pressure lubricated 4 stage CompAir Compressor
- ✓ Closed loop water cooled Model #5437IA high pressure air compressor
- ✓ Powered By John Deere 4.5L PowerTech® tier 3; 140 HP diesel engine
- ✓ Centrifugal controlled clutch assembly with ramp control for load/ unload features
- ✓ 96 SCFM @ 5000 PSI
- ✓ 100 Standard Cubic Feet per Minute (SCFM) @ 2200 PSI
- ✓ Full automated control system with visual and audible alarm system
- ✓ Automatic condensate drain system
- ✓ Dimensions: 133"L x 58"W x 73"H (exhaust pipe removed)
- ✓ 95 Gallon Fuel tank
- ✓ Weight: 8,480 lbs
- ✓ Built in Fail-Safe

Contact Us:

888-800-2232 – Toll-free

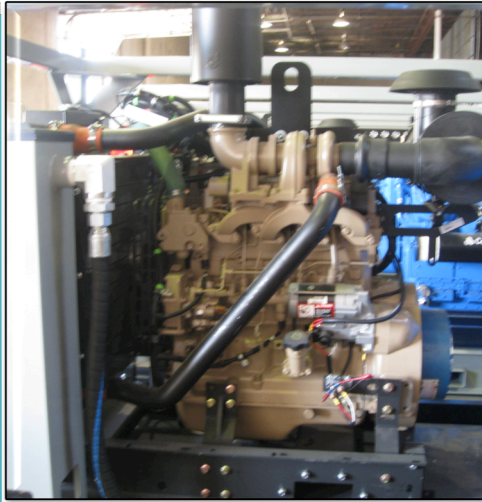
[Fred@alphaseismiccompressors.com](mailto:Fred@alphaseismiccompressors.com)

ALPHA   
**SEISMIC COMPRESSORS**  
Offshore Rentals | Air Source Solutions



## Compressor Block

- ✓ High Pressure Reciprocating Compair 54371A
- ✓ Maximum Working Pressure of 5000PSI
- ✓ 1st Stage Running Pressure 35-50 PSI
- ✓ 2nd Stage Running Pressure 200-270 PSI
- ✓ 3rd Stage Running Pressure 800-1200 PSI
- ✓ Final Stage Relief Valve Setting 5500 PSI
- ✓ Automatic Diaphragm Drain System
- ✓ Pressure Maintaining Valve Setting of 1700 PSI
- ✓ Liquid Cooling Method
- ✓ Compressor Speed of 1800 RPM
- ✓ Absorbed Power of 100 HP
- ✓ Counter Clockwise Direction Of Rotation (Facing Flywheel)
- ✓ 4 Stages



## Prime Mover

- ✓ Open Industrial Diesel Engine
- ✓ John Deere 4045hf285
- ✓ Operating Range of 1700-2400 Rpm
- ✓ Inline 4 Cylinder
- ✓ Power Rating of 140 HP
- ✓ 4.5 Liter Displacement
- ✓ CCW Rotation
- ✓ 12 VDC Electrical System
- ✓ Tier 3 Emissions Standards

## Recommended Fluids

- ✓ Compressor Oil - Ultrachem 751
- ✓ Engine Oil - Shell Rotella T 5W30
- ✓ Hydraulic Fluid - Shell Type R&O
- ✓ Coolant - Dura Cool 50/50



## Package Features

- ✓ Easy to use User Panel
- ✓ Gauges and LCD Display
- ✓ Maximum Working Pressure of 5000PSI Direct Drive Centrifugal Clutch
- ✓ No Storage Cylinders/Accumulators
- ✓ 1/2 Inch Fnpt Outlet Connections
- ✓ 12 Vdc Control System Voltage
- ✓ Hydraulic Cooling Fan Drive
- ✓ Forklift Tines/ 4 Point Overhead

## Capacities

- ✓ 95 Gallon Fuel Capacity
- ✓ 7 Gallon Oil Capacity
- ✓ 4 Gallon Engine Oil Capacity
- ✓ 15 Gallon Coolant Capacity
- ✓ 5 Gallon Hydraulic Fluid
- ✓ 10 Gallon Waste Water/Oil